

WINDOWS CONTROL SOFTWARE

Key features:

- Control all Power Supply Functions
- Retrieve, Display and Store Measurement Data
- Supports all APS DC Power Supply Models
- Create, Save, Edit and Execute Test Scripts
- Develop Test Scripts Off-Line for later use
- Windows 7 and Windows 8.1 Compatible
- Supports USB, RS232, GPIB and LAN Interfaces
- Built-in Simulation Mode Serves as a Useful Operator Training Tool



Computer Controlled DC Power Supply

Overview

The ADAPTIVE POWER SYSTEMS DC Power Supply Windows control software provides a graphical user interface (GUI) that allows you to take full control of all functions and settings. Voltage, Current, Control Mode are all settable from this main screen. Using a simple front panel control screen layout, this Windows software allows convenient data entry using a PC keyboard and mouse. The larger screen available on PC's provides multiple readouts and enhanced data displays compared to front panel operation. A bus trace viewer feature allows the user to view commands sent to the power supply.

Comprehensive Model Support

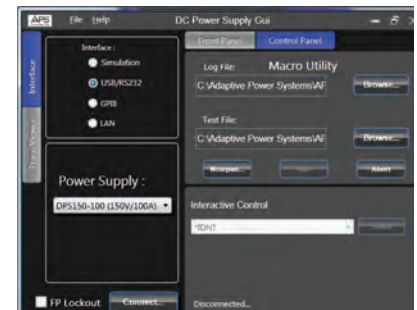
The same GUI program supports all Adaptive Power Systems DC Power Supply models. This means only one program is required to support a wide range of applications.

Modern Software Design

Developed in C# on the Microsoft™ Visual Studio platform, the APS DC Power Supply GUI program is fully compatible with both Windows 7 and Windows 8 and takes full advantage of 64 bit technology and advanced functions like multi-threading to query measurement data in the background while the user interacts with the program.



Interface Selection and Output Control Screen



Test Script Execution and Interactive Command Line Screen



DC POWER SUPPLY CONTROL SOFTWARE

Easy Operation Tabbed Interface

A common Tab based user interface paradigm was used to design the DC Control software making operation a simple a simple task. Available Tabs, controls and display areas are highlighted below.



Computer Requirements

The Adaptive Power Systems DC Power Supply GUI software can be installed and run on any Windows PC with adequate resources to run Windows 7 or Windows 8.1.

To communicate with the DC power supply, the PC must have a supported interface. Note that use of the GPIB bus requires a GPIB controller in the PC or a suitable USB to GPIB controller adapter. (not included with this software)

Availability

The Adaptive Power Systems DC GUI software can be downloaded from the Adaptive Power Systems website (www.adaptivepower.com).

Service and Support

Adaptive Power Systems' customer support is second to none. Our Customer Support Program provides the training, repair, calibration, and technical support services that our customers value. So, in addition to receiving the right test equipment, our customers can also count on excellent support before, during and after the sale. With company owned support and service centers around the world, support is never far away.

Complete calibration and repair services are offered at our US, European and Chinese manufacturing facilities (see contact info below). Calibrations are to original factory specifications and are traceable to NIST (National Institute of Standards and Technology).

NORTH AMERICA

Adaptive Power Systems
Irvine, USA
Phone: +1(949) 752-8400
Fax: +1 (949) 756-0838
Email: support@adaptivepower.com

EUROPE

Caltest Instruments Ltd.
Guildford, United Kingdom
Phone: +44(0)1483 302 700
Fax: +44(0)1483 300 562
Email: support@adaptivepower.com

CHINA

PPST Shanghai Co. Ltd.
Shanghai, China
Phone: +86-21-6763-9223
Fax: +86-21-5763-8240
Email: support@adaptivepower.com

NEED HELP?

sales@adaptivepower.com
OR CALL
Toll Free: +1 (866) 517-8400
Intl: +1 (949) 752-8400



Proudly Represented by:



ADAPTIVE POWER SYSTEMS

17711 Mitchell North
Irvine, CA 92614
United States
Toll Free: 1.866.517-8400
Tel: +1.949.752-8400
Fax: +1.949.756-0838