

## LAN Setup

1. Connecting AC power and the network line to the 3300F mainframe, connect the other side of the network line to the HUB.
2. Run the ETM.EXE which bellows the path of the LAN on the CDROM drive, it will show as fig D2-1 if not , please press F5 to search again, or check the first step was succeed or not.

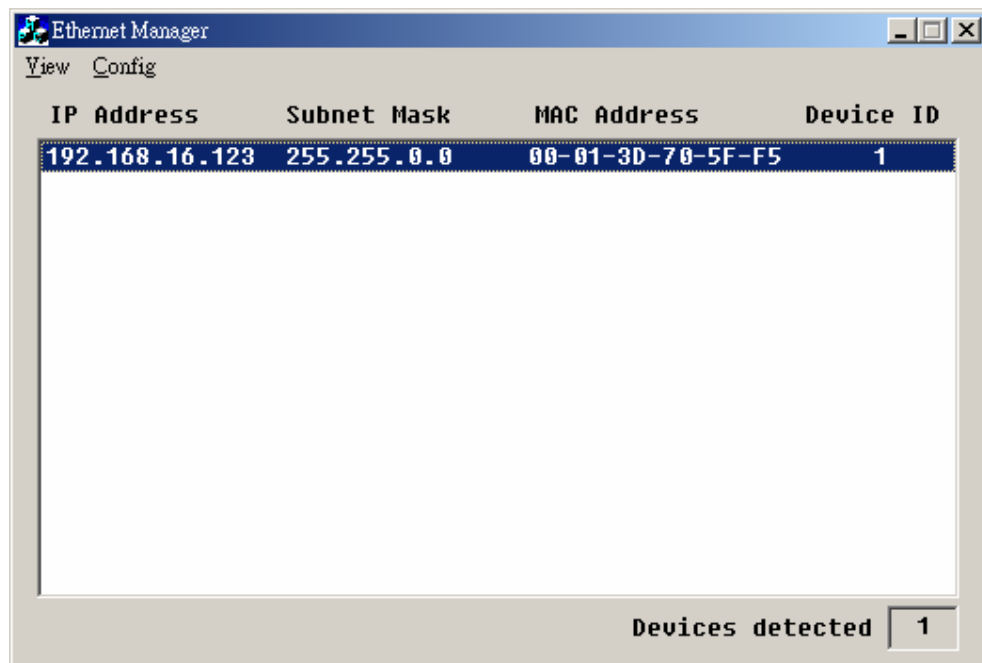


Fig D2-1

3. It will be shown the installation which has been searched on the screen , click it and select the Set IP Address bellows Config :



4. Set an useful IP Address and Subnet Mask.

5.It will be shown the Setup Device as the following figure if all steps was corrected to be run.

Controller Setup	
IP address	192.168.16.128
Subnet mask	255.255.255.0
Gateway address	192.168.16.11
Network link speed	Auto
DHCP client	Disable
Socket port of HTTP setup	80
Socket port of serial I/O	4001 TCP Server
Socket port of digital I/O	5001 TCP Server
Destination IP address / socket port (TCP client and UDP)	0.0.0.0 0
Connection	Auto
Serial I/O settings (baud rate, parity, data bits, stop bits)	115200 N 8 1
Interface of serial I/O	RS 232
Packet mode of serial input	Disable
Device ID	5
Report device ID when connected	Disable
Setup password	
Access password	

Update

6.Insert the numbers as the following :

- i.IP Address
- ii.Subnet Mask
- iii.Gateway Address
- iv.Network link speed : AUTO
- v.DHCP client :The DHCP is set Disable
- vi.Socket port of HTTP setup : It is set to be 80 , don't need to change
- vii.Socket port of serial I/O : Set it to be 4001
- viii.Socket port of digital I/O : Set it to be 5001
- ix.Destination IP address / socket port (TCP client and UDP) Connection :  
Don't need to change
- x.Serial I/O settings (baud rate, parity, data, bits, stop bits) :Insert 115200, N, 8, 1
- xi.Interface of serial I/O : Only RS-232

xii. Packet mode of serial input : It is set to be Disable

xiii. Device ID : It is set to be 5

xiv. Setup password : Not required.

xv. Access password : Not required.